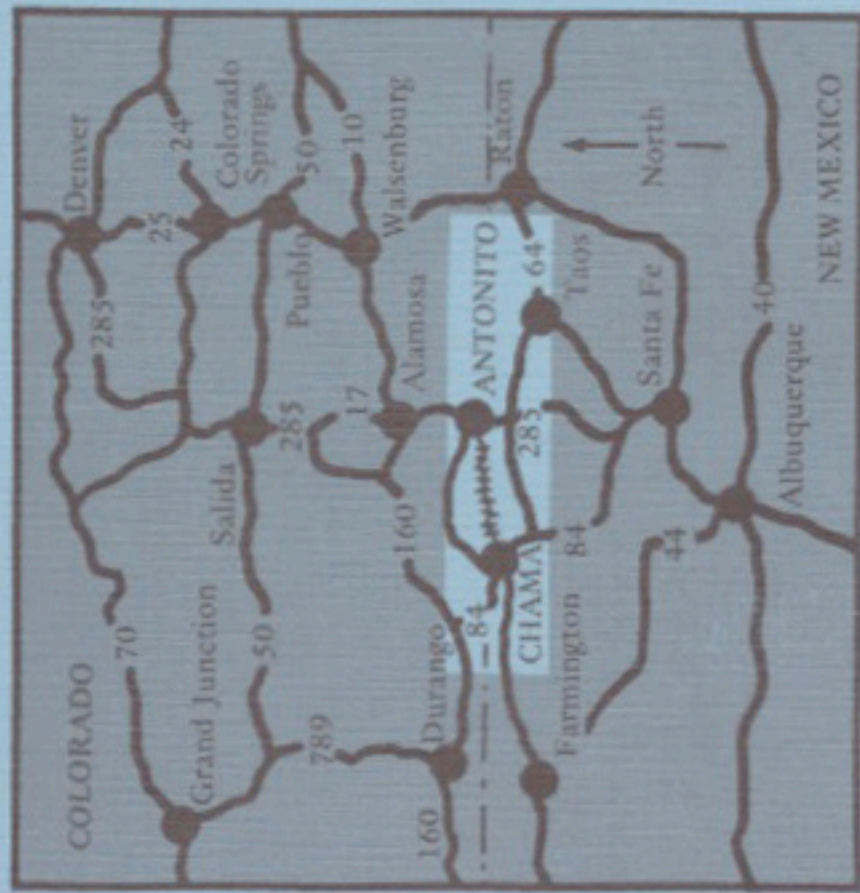


All narrow-gauge excursion trains on the Cumbres & Toltec Scenic Railroad pass through the awesome Toltec Gorge and crest the summit of 10,015-foot Cumbres Pass, highest railroad pass in America still served by scheduled passenger trains. Originally built in 1880 as part of the Denver & Rio Grande Railroad, this 64-mile trip offers sightseers a unique opportunity to revisit a bygone era in American history while viewing some of the most spectacular mountain scenery in North America.



In addition to the 64-mile rail tour, your day on the Cumbres & Toltec will include a one-way motor coach trip over La Manga Pass and through the scenic Conejos River Valley. All fares include both rail and motor coach segments. (See timetable on reverse side.)



All trains stop near the midpoint of the tour at the former "tank town" of Osier, Colorado. Here passengers are afforded the opportunity to purchase hot lunches and enjoy a magnificent view while the locomotive is serviced and takes on water. (Lunches are not included in ticket prices.)

THE CUMBRES & TOLTEC SCENIC RAILROAD IS A REGISTERED NATIONAL HISTORIC LANDMARK. IT IS OWNED BY THE STATES OF COLORADO AND NEW MEXICO AND OPERATED BY SCENIC RAILWAYS, INC.

HOW TO MAKE YOUR RESERVATIONS

By Mail: The Reservation Request form below is for your convenience. Just fill out the form, compute the total remittance required, and mail the form with your check or money order to the address specified. If you wish tickets charged to your Master Charge, BankAmericard or American Express account, enter your card number in the blank provided.

By Phone: Telephone reservations can be made during business hours by calling our service desk in Chama at (505) 756-2151. Your tickets will be mailed to you promptly (time permitting) or we will hold them for pickup at the Will Call Desk.

In Person: Our ticket office in Chama is open on week-days year-round and on all train days. You can purchase tickets there or make reservations personally between the hours of 9 A.M. and 5 P.M. The Antonito depot is staffed on train days only.

Terms of Sale: Cash refunds or exchanges on later trains (as space is available) will be made only if tickets are returned and in the hands of the agent not less than five days prior to trip date. Refunds will not be made on any other basis. All sales within five days of trip date are final.

Group Discounts: Special fares are available for groups of 22 or more. Write or phone the Chama office for detailed information.

MAIL TO: CUMBRES & TOLTEC SCENIC RAILROAD
P.O. Box 789
Chama, New Mexico 87520

RESERVATION REQUEST (Valid in 1974 only.)

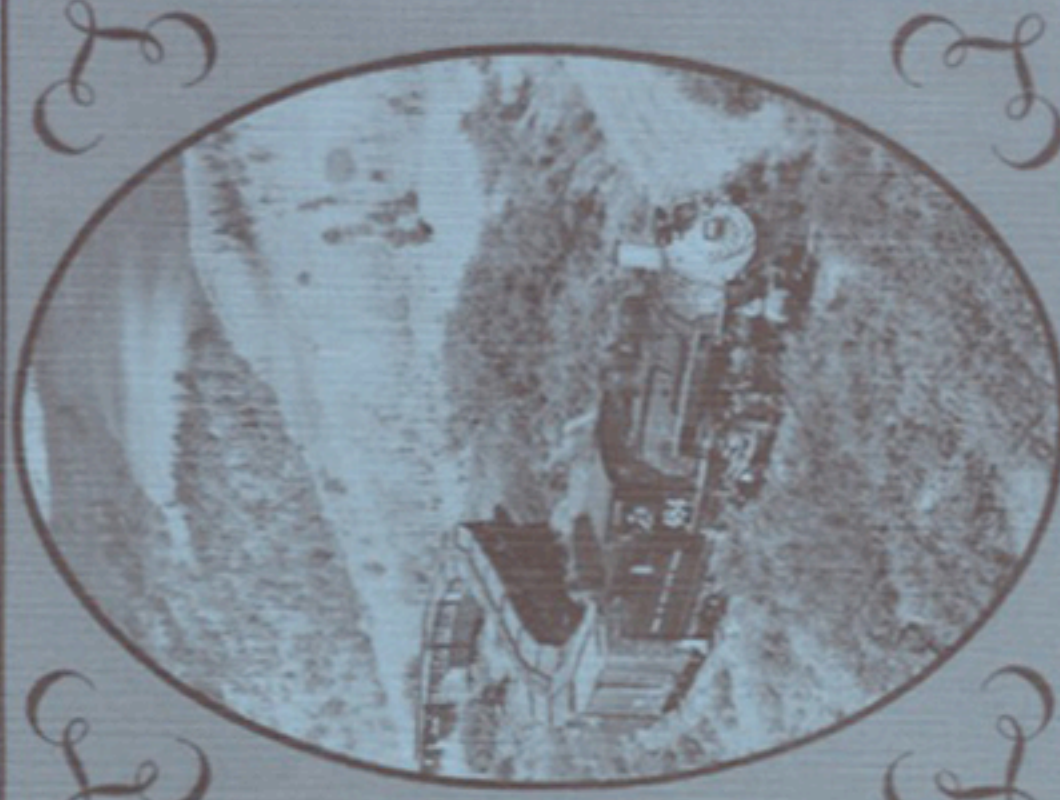
NAME _____
ADDRESS _____
CITY _____ STATE _____ ZIP _____
Date of trip: _____ Day of week _____
Adults @ \$14.50; _____ Children @ \$5.00
Total remittance enclosed: _____
Point of origin of tour _____ Antonito, Colorado
(check one only): _____ Chama, New Mexico
BankAmericard _____ MasterCharge _____
American Express _____
Card No. _____

LATE SEASON

1974

SPEND A DAY OF EXCITEMENT ON AMERICA'S MOST DRAMATIC STEAM RAILROAD

CUMBRES & TOLTEC
SCENIC RAILROAD
Antonito, Colorado - Chama, New Mexico



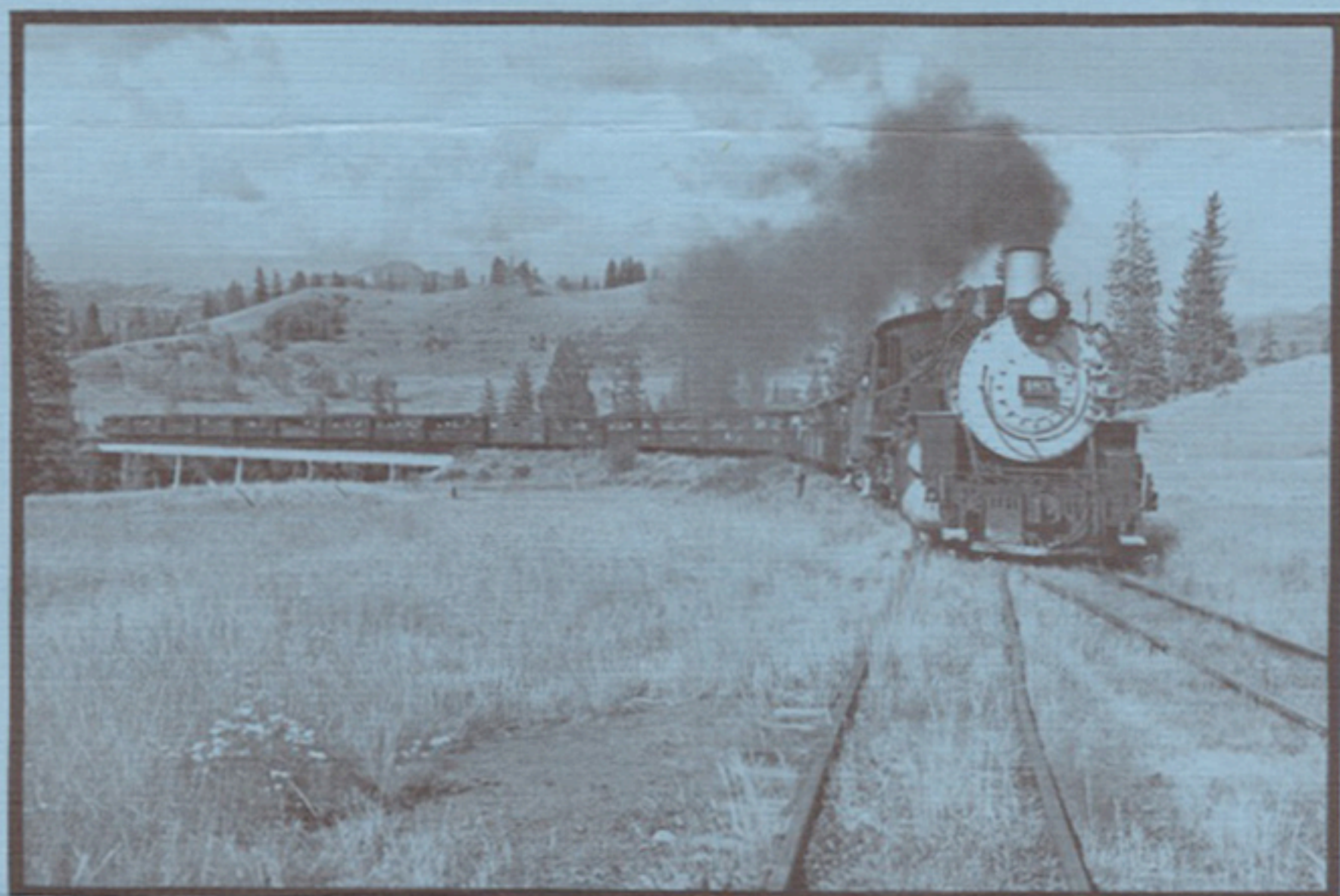
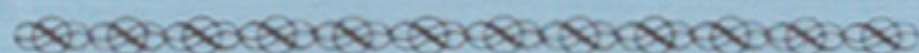
Trains Operate May 25 Through October 6, 1974
CUMBRES & TOLTEC SCENIC RAILROAD
P.O. Box 789
Chama, New Mexico 87520
(505) 756-2151

1974

CUMBRES & TOLTEC SCENIC RAILROAD

May 25 through October 6

FARES: Adults \$14.50, Children (11 and under) \$5.00



SEE: Forests of Aspen, Spruce and Pine... high trestles and gaping gorges... fields of colorful wild flowers... dramatic rock formations... peaceful alpine meadows... historic Cumbres Pass... rushing streams and rivers... antique rail equipment and facilities... awesome grades and mountain vistas.

Timetable

Steam-powered Trains Operate August 3 Through October 6

SERVICE ORIGINATING IN ANTONITO, COLORADO:

	SUNDAY	MONDAY*		FRIDAY*	SATURDAY
Leaving Antonito	8:00 am.	10:00 am.	*Operation on Mondays and Fridays only if demand warrants. Inquire first!	8:00 am.	10:00 am.
Arriving Antonito	4:30 pm.	6:15 pm.		4:30 pm.	6:15 pm.

These trips are "One way by train—One way by bus" over the entire line. 8:00 am. departures have the bus section first. 10:00 am. departures have the train section first.



SERVICE ORIGINATING IN CHAMA, NEW MEXICO:

	SUNDAY	MONDAY*		FRIDAY*	SATURDAY
Leaving Chama	10:00 am.	8:00 am.	*Operation on Mondays and Fridays only if demand warrants. Inquire first!	10:00 am.	8:00 am.
Arriving Chama	6:15 pm.	4:30 pm.		6:15 pm.	4:30 pm.

These trips are "One way by train—One way by bus" over the entire line. 8:00 am. departures have the bus section first. 10:00 am. departures have the train section first.



CUMBRES & TOLTEC SCENIC RAILROAD

P.O. Box 789, Chama, New Mexico 87520

Phone: (505) 756-2151

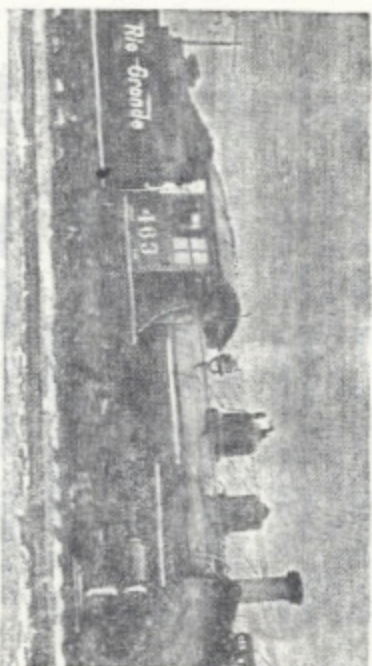
ANTONITO COLORADO

Hunting and Fishing Paradise
on the Famous
Conejos
River



In the Beautiful San Luis Valley

ANTONITO CHAMBER OF COMMERCE



Home of the Gene Autry Engine

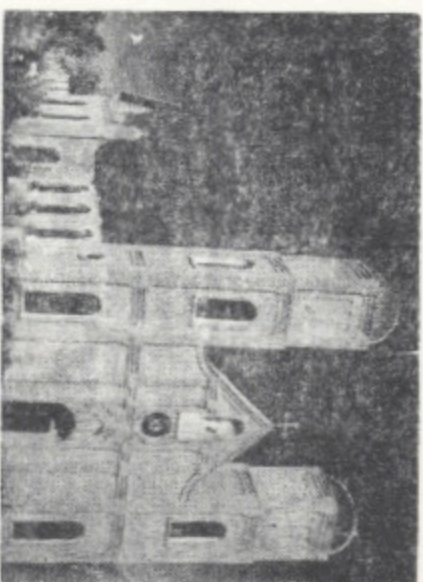
and

Narrow Gauge National Monument

ANTONITO, COLORADO

On March 30, 1972 Welcome Home Ceremonies were held here for Engine 463. This Engine was donated to the Town of Antonito by Movie Star and Singer, Gene Autry. Last fall, 463 was taken to Chama, N. Mex. where plans are for an overhaul job, in hopes that 463 will be put to work hauling trains back and forth from Antonito Chama.

Our Lady of Guadalupe Church



Visit our Lady of Guadalupe

Colorado's oldest Church - located 1 mile North of Antonito at Conejos, Colorado. The present Church is a rebuilding and a remodeling of the original church and has been preserved as such. It has a Mystical Rose of Guadalupe smiling down from above to the main entrance. It also has a Lourdes Grotto in the Church yard.

The Theatine Fathers who staff the parish at the present time believe it was begun in 1858 and cite in Support of their convention a document which reads as follows:

The Parish of Our Lady of Guadalupe, commonly called Conejos, was set up on June 10, 1858. The Rev. V. S. Montano was the first Priest in charge. The same time the Church was begun.

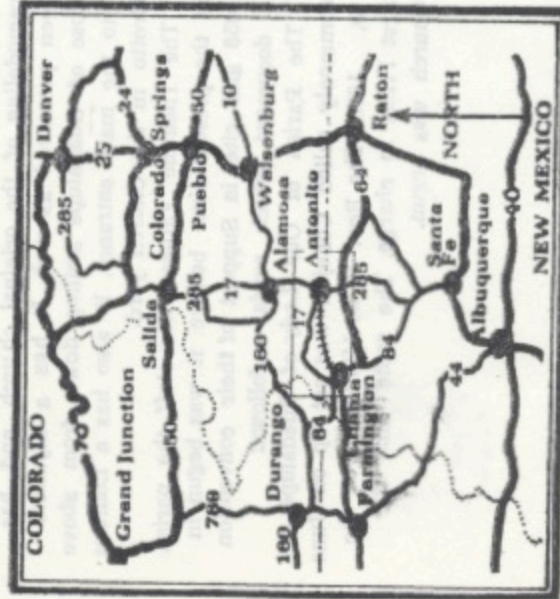
Antonito, Colorado

Founded by Railroad in 1880

Antonito, first known as San Antonio Junction, was founded in 1880 by the Denver and Rio Grande Western Railroad. Later the name was changed to Antonito, being Spanish for "little Anthony" and is derived from the San Antonio Mountain and San Antonio River to the south of the community.

When the railroad built south from Alamosa, company officials failed to get the desired concessions at the old town of Conejos, so they laid out a site of their own to the southeast. The first train pulled into Antonito the evening of March 27, 1880, and since that time the town has been a shipping center in the south end of the San Luis Valley. For many years it was the junction of two branches of the railroad, one west over Cumbres Pass into the San Juan country and Durango, the other south into the ancient capital of New Mexico, Santa Fe. In the late '30's the south branch was discontinued.

Antonito is located in the south central part of Conejos county, only six miles north of the New Mexico stateline. It lies between the Conejos and San Antonio rivers at an elevation of 7,888 feet above sea level and is the gateway to the beautiful Conejos river canyon. Antonito became an incorporated town on December 29, 1889, and some of the leading merchants of nearby Conejos established their thriving businesses in the new town.



Agriculture

Agriculture, the basic industry of Conejos County, brought about \$8,000,000 into the county in 1972. With a ninety to one hundred day growing season and less than seven inches of rainfall, the climate is ideal for cattle, sheep and selected cool season crops such as barley, potatoes and alfalfa.

Land without surface water rights or irrigation wells for irrigation has little value for intensive farming. Of the 815,000 acres, only 266,000 are privately owned. The county's 395 farms involve 430,000 acres part of which are leased public land. About 122,000 acres are under irrigation, but only 91,000 of these are in irrigated cropland.

The 20,000 acres of alfalfa bring the greatest return, but potatoes, malting barley and head lettuce bring higher returns per acre. Other popular crops are feed barley, oats, wheat, field peas, dry beans and native hay. Once Conejos County was the fresh pea capital of the world, but the fresh peas didn't freeze well and are now grown elsewhere.

Livestock usually generate more income than crops. There are over 31,000 cows and calves and 35,000 stock sheep in the county as well as 2500 hogs and 3000 horses and mules. There are two large cattle feedlots.

Of the 395 farmers and ranchers, who average 48 years of age, 113 work over 200 days per year off the farm at full time jobs.



travel scenic all season



RAIL RIDE

Originally built in 1880, This famous Narrow Gauge Railroad is now owned by the states of New Mexico and Colorado and operated by Scenic Railroads, Inc.

Plan now to bring your family and friends to enjoy America's most exciting rail adventure. Call or write for Information and Reservations. Advance Reservations recommended.

The Cumbres and Toltec is a 64 mile remnant of the once vast Narrow Gauge system built by the Denver and Rio Grande in the 1880's. It was purchased by the two states in 1970 because of its potential appeal as a tourist attraction.

All Tours are Round Trips, one way by Train, and one way by Motor Coach - Special Fares for large groups are available for Charter Trains. Rates and Information may be obtained upon request.

Advanced reservations are strongly advised. Write or Call: Cumbres and Toltec Scenic Railroad, P.O. Box 789, Chama, New Mexico, 87520; Telephone: (505) 556 2838 or 756-6411.

Daily service was instituted for the first time this year during July and August with Chama departures on Frida's, Sundays and Tuesdays, Antonito departures on Saturdays, Mondays and Wednesdays. Special Thursday trains will originate at Cumbres Pass. Colorado, running to Toltec Gorge and back; no bus service, is required for these round - trips.

Six unusual "Moonlight Specials" will also be run on July 13, August 10, September 7 (Antonito departures), July 14, August 11, and September 8 (Chama departures). According to the company, these trains are scheduled to coincide with the dates of full moons, allowing passengers to enjoy the mountain scenery by moonlight.

During September and early October, the four - train per week schedule will be resumed (Fridays through Mondays), with the last train running from Antonito to Chama on Monday, October 15.

The company has also announced a new fare schedule for all train as follows:

- Regular through trains—\$14.00 for adults, \$5.00 for children 12 and under.
- Thursday trains from Cumbres — \$12.00 for adult, \$3.00 for Children.
- Moonlight Specials — \$17.00 for adults, \$7.00 for children including steak dinner.

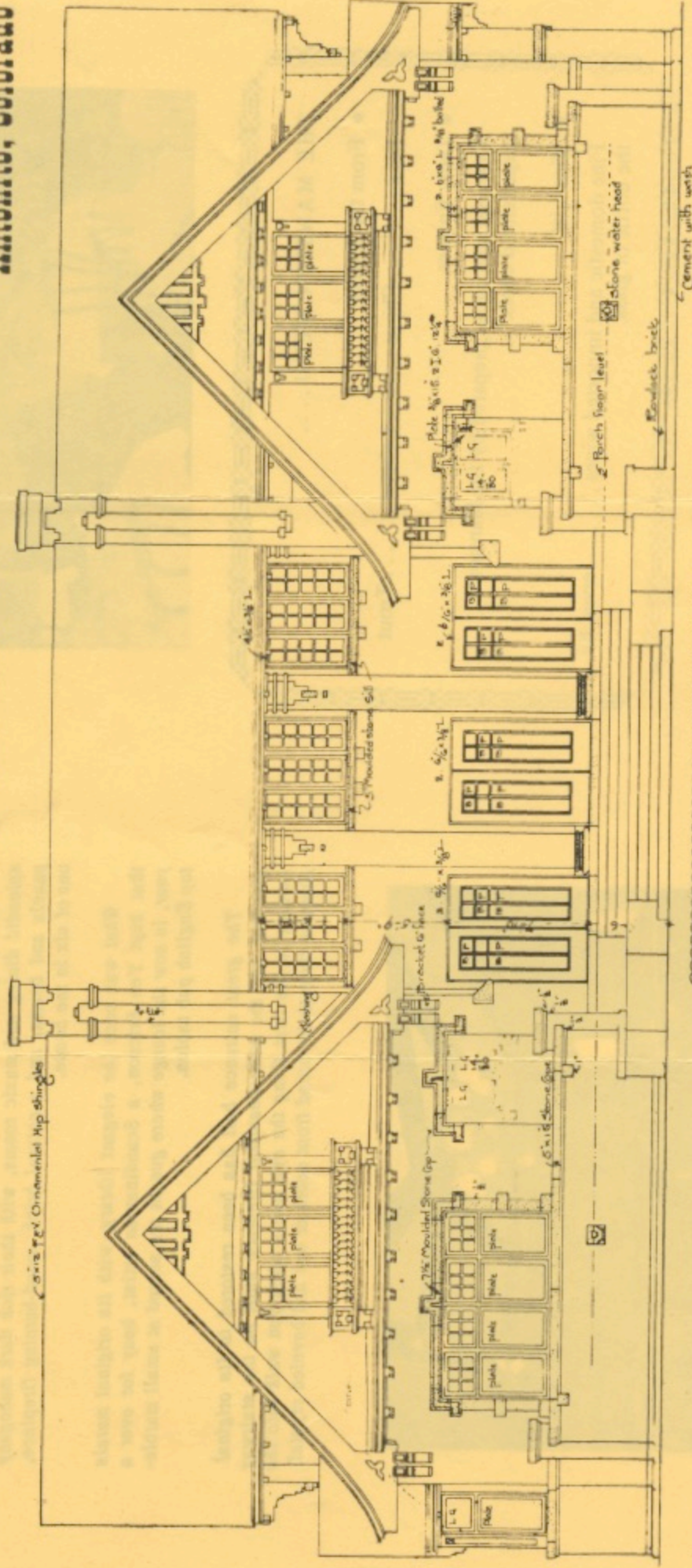
Your stay in southern Colorado won't be complete until you've dined at the Mansion Supper Club. Enjoy superb food and your favorite beverage served in the restored grandeur of Colorado's bygone days.

Travelers on the Cumbres-Toltec narrow gauge railroad will find the Mansion Supper Club the perfect place to end their day. Here they can relax in comfort and reminisce over the day's trip through some of the country's most spectacular scenery.

THE MANSION

RESTAURANT and LOUNGE

Antonito, Colorado



for reservations:

303-376-5598

The Mansion is conveniently located almost within sight of the Cumbres-Toltec Railroad's Antonito station.

Located Just Off The Main Highway

515 RIVER STREET



Today's guests at the Mansion Supper Club are, in a small way, sharing the atmosphere of elegance and grandeur that greeted the elite of the San Luis Valley 60 years ago when they attended parties at the grand home of Fred Warshauer.

Warshauer was a Polish immigrant who came to America to make his fortune. He prospered in the sheep business in Antonito and in 1910 he started a house for his wife and finished with a mansion.

Dinner guests at the Mansion dine in what once were the splendid dining and music rooms, with their rich dark mahogany panels and beams, and a natural brick, wood-burning fireplace, one of six in the house.

What was once the elegant library, with its original murals that kept Yen Ericson, a Scandinavian artist, busy for over a year, is now the lounge where guests are served at small marble-top English pub tables.

The great entrance hall has been restored to its original grandeur and the wide beautiful fireplace built on the stairway landing is the first thing the eye meets when you walk into the Mansion through its broad front doors of oak and beveled crystal.

THE MANSION MENU

- From the Broiler
- Steaks Chops Lobster Trout
- Daily Entrees
- Gourmet specialties prepared by the Mansion's experienced chefs.
- Wine List
- Fine domestic and imported wines served by the bottle or glass.

Luncheon is served daily from 12:00 noon to 2:00 p.m.

Supper is served from 5:30 p.m. to 10:00 p.m. Mondays through Saturdays, and from 12:00 noon until 8:00 p.m. on Sundays.

The cocktail lounge is open from 12:00 noon to 1:00 a.m. Mondays through Saturdays, and from 12:00 noon until 10:00 p.m. Sundays.

